



000247780.01

Switch-It CTRL+5[®] with Assignable Buttons

Owner's Manual

⚠ WARNING!

Please read these instructions carefully before you start the installation work. If you do not understand and follow the installation instructions, including the Warnings and Cautions this can lead to injury to the user and the guarantee can be voided by this. If you have any questions please call your local Sunrise Medical branch (contact details on the back page).

NOTE: Check all parts for shipping damage. In case of damage DO NOT use. Contact Carrier/Sunrise Medical for further instructions.

⚠ WARNING

DO NOT install this equipment without first reading and understanding this manual. If you are unable to understand the Warnings, Cautions, and Instructions, contact a qualified clinician or supplier - otherwise injury or damage may occur.

⚠ WARNING



This device can be affected by Electro-Magnetic Interference (EMI) and Radio Frequency Interference (RFI).

- Radio wave sources, such as radio stations, TV stations, amateur radio (HAM) transmitters, two-way radios, and cellular phones can affect powered control.
- If unintended movement or brake release occurs, turn the power wheelchair OFF and do not operate until inspected, repaired, and/or replaced.
- If the chair acts in an erratic manner, turn the power wheelchair OFF and do not operate until inspected, repaired, and/or replaced.
- If the joystick stem is damaged, it can cause the chair to operate erratically, turn the power wheelchair OFF and do not operate until inspected, repaired, and/or replaced.
- If any of the device cabling becomes frayed, cut, or disconnected in any way, turn the power OFF and do not operate until inspected, repaired, and/or replaced.

User information

Congratulations on choosing a Switch-It product. Sunrise Medical's high-quality mobility products are designed to enhance independence and make your everyday life easier.

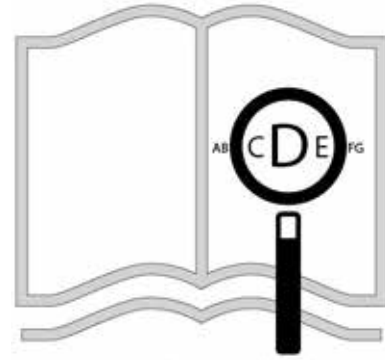
As a part of our ongoing product improvement initiative, Sunrise Medical reserves the right to change specifications and design without notice.

This user manual

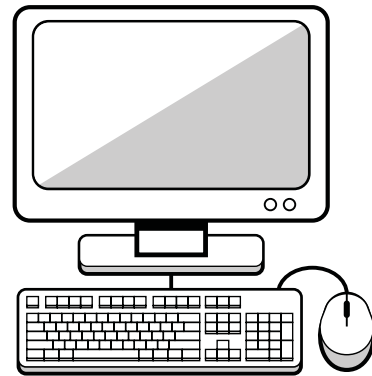
This user manual will help you to use and maintain your product safely.

Dealer: This owner's manual must be given to the rider of this wheelchair.

Rider: Before using this wheelchair read this entire manual and save it for future reference.



If you are visually impaired, this document can be viewed in PDF format at www.SunriseMedical.co.uk



General Warnings

WARNING!

- Do not open or tamper with the Ctrl+5 enclosure. Tampering could cause the internal circuit to fail.
- Do not tamper with fasteners on the Ctrl+5 unless performing routine maintenance.
- Ensure mounting hardware is hand tight.
- Check mounting hardware every month to ensure it is hand tight.
- The wire harness from the Ctrl+5 should not be loose or in the way of the seat functions. Ensure that wires are not pinched as the power chair is actuated.
- This product is intended for a single user.
- Always use parts and/or accessories that have been recommended or approved by Sunrise Medical when servicing this chair.
- Never pull on cables. This can result in wires breaking inside the connector or harness. To remove a plug or connector, always grasp the plug or connector itself.
- If a button on the Ctrl+5 is accidentally pushed that function will become active.
- Do not reuse any mounting hardware including fasteners.
- Product labeling may fall off due to environment heat, sun exposure, or moisture. Contact your dealer for a new label if this occurs.
- Ensure powerchair is off when not in use.
- Ensure powerchair is off when operating a motor vehicle.
- Ensure not to hit, lean on, or hang things from your Ctrl+5.
- Do not use your chair in a shower, pool or other body of water.
- Avoid excess moisture (for example, do not leave your chair in a damp bathroom while taking a shower).
- Dry your Ctrl+5 immediately if it gets wet or damp, or if you use water to clean it.
- Avoid contact with salt or salty conditions as this may cause damage to the Ctrl+5.

Safety Warnings

Safety: Temperature

WARNING!

- If you do not use the Ctrl+5, ensure that it is not exposed to direct sunlight for lengthy periods of time. Certain parts of the Ctrl+5, such as the keypad, the cable, and the enclosure can become hot or brittle if they have been exposed to full sunlight for too long. This may cause burns or to the skin or render the Ctrl+5 inoperable.
- Extended sun exposure can result in product labels becoming discolored, illegible or falling off.

Safety: Electromagnetic radiation

CAUTION!

The standard version of your Ctrl+5 device has been tested on the applicable requirements with respect to electromagnetic radiation (EMC requirements) in spite of these tests:

It cannot be excluded that electromagnetic radiation may have an influence on the Ctrl+5.

For example:

- Mobile telephones.
- Large scale medical apparatus.
- Other sources of electromagnetic radiation.

It cannot be excluded that the Ctrl+5 may interfere with electromagnetic fields.

For example:

- Shop doors.
- Burglar alarm systems in shops.
- Garage door openers.

If an EMC event occurs there may be unintended operation of your Ctrl+5 device.

In the unlikely event that such problems do occur, we request that you notify your authorized dealer immediately.

Safety: Choking hazard

DANGER!

This mobility aid uses small parts which under certain circumstances may present a choking hazard to young children.

Safety: Assignable controls

WARNING!

It is possible to assign a function to an input control (buttons, jacks) to your seating system. If controls have been assigned to perform a dual or alternate function ensure you know what each control operates.

Please contact your authorized dealer or the Sunrise Medical technical service department if you do not receive this information. Failure to do so may result in product or property damage and/or injury.

Maintenance tips

The wheelchair's lifespan is dependant on it being well maintained.

For information concerning specific settings, maintenance, or repair work, please contact your authorized Sunrise Medical dealer.

Storage Tips:

WARNING!

- Store your Ctrl+5 in a clean, dry area. If you fail to do so, parts may rust or corrode.
- Before using your Ctrl+5, make sure it is in proper working order.
- If you store this Ctrl+5 for more than three months, have it inspected by an Authorized Dealer before use.

Cleaning and disinfecting:

- The Ctrl+5 should be wiped down once per week.
- If a foreign substance is present wipe down (with a slightly damp, not wet) cloth.
- Make sure that you dry all parts of the Ctrl+5 prior to use.
- Be sure to clean your Ctrl+5 regularly. This will help you find loose or worn parts. If you find loose, damaged or worn parts replace before use.

CAUTION!

Make sure that you dry all parts of your wheelchair if it becomes wet or damp, such as when cleaning, or if it is used in a wet or damp atmosphere.

CAUTION!

- Do not use solvents, bleaches, abrasives, synthetic detergents, wax polishes, or aerosols.
- Disinfectants may be used in dilution as specified by the manufacturer.
- Ensure surfaces are rinsed with clean water and dried thoroughly.

System Pre-check

Before each use perform the following:

- Ensure your powerchair is on and charged.
- Ensure your buttons are programmed to the desired intended function.
- To ensure buttons are programmed as intended, press each button to verify functionality.
- Ensure label above keypad matches the functionality of the button.

A. Product Description:

The Switch-It CTRL+5® with Assignable Buttons is a switch box device that plugs into the PG Drives R-Net system and allows for the set up of a maximum of ten different functions in ten discrete buttons (each switch is two buttons). The Ctrl+5 switches are pre-programmed from the factory to default values for the actuators on the chairs, however this particular model uses the Sunrise Medical patented Assignable Buttons feature. This feature allows the button assignments to be changed to any of the Assignable Buttons functions to best suit each unique user. The system allows for having two standard Ctrl+5s or one standard Ctrl+5 and one Ctrl+5 with Remote Seating on the same power wheelchair, if desired, for a total of up to 20 different functions in twenty discrete buttons.



Fig. 1

B. Technical Information:

- Control Type: Switched/Digital Power Wheelchair. Peripheral Function Control Peripheral Function Control.
- Activation Type: Mechanical switch
- Feedback: Activation of programmed power wheelchair functions (i.e. seat functions).
- Connector Type: R-net cable (male) to power wheelchair data-bus connecting block
- Dimensions: approximately 4.25" (108 mm) W x 2.5" (63.5 mm) H x 1.25" (31.75 mm) D.
- USB port on the Ctrl+5 provides up to 2.0 Amps



Fig. 2

C. Compatibility:

- Penny & Giles R-Net Electronics required. Power wheelchair must have assignable buttons feature.
- In order to use the Switch-It Remote Seating app with your powerchair you must have the Remote Seating enabled Ctrl+5 (Part Numbers 247375 and 247376) and a complex seating module, CxSM, with software version 5.0 or greater.



Fig. 3

D. Key Features:

The user may choose from two different Ctrl+5 keypad versions: a flat push button version, Figure 1, or a toggle version, Figure 2.

Customizable access - patented Assignable Button technology and programming, with use of the power wheelchair dealer's PC Programmer and dongle, provide the user with direct access to up to 20 different functions (10 per CTRL+5).

The CTRL+5 may be mounted in several ways for convenient access to seat function controls:

- Arm rest mount (cover picture).
- Seat rail mount — mounts similar to seat control in automobiles, Figure 3.
- Back cane mount — for attendant control of powerchair peripherals, Figure 4.

The Ctrl+5 has a built-in USB port is for charging or powering peripheral devices, Figure 5. The current is limited to 2.0 Amps, which is sufficient to charge most smartphones and tablets. The port is also on a pigtail so it can be moved from one side to the other depending on how the user prefers to access it.



Fig. 4



Fig. 5

INSTALLATION

Install the CTRL+5 in a location that is easy for the intended user to access.

Only authorized Sunrise Medical dealer should install this product.

INDICATORS

The behavior of the indicators is dependent on the seating module in the system.

1. With an Intelligent Seating Module (ISM) the indicators, Figure 6, will all be green or yellow.
 - Yellow indicates a drive inhibit is active and green indicates there is no drive inhibit.
 - All white indicators meant the module has not authenticated with the powerchair.
2. With a Complex Seating Module (CxSM) the indicators, Figure 6, are linked to the button below them.
 - When a button is assigned to any other option but seating, the light will be solid white.
 - When a button is assigned to a seating Memory axis, and that axis is running, the light will be blinking green.
 - When a button is assigned to a seating Memory axis and a drive inhibit occurs the LED will change to the drive inhibit color once the axis is stopped.
 - When a button is assigned to a seating Memory axis other than a Memory axis the drive inhibit color change will happen when the inhibit happens.
 - The LED color will be Red for a lockout drive inhibit.
 - When a button is assigned to any seating axis and no actuator channel within that axis has called for a drive inhibit the LED color will be Green.

PROGRAMMING ASSIGNABLE BUTTONS

1. Changing the assignable buttons of the Ctrl+5 should only be done by an authorized Sunrise Medical dealer.
2. Connect powerchair to PC Programmer using a Programming Dongle.
3. Read Chair into the programmer by clicking on the blue down arrow in the toolbar, shown at right.
4. Open the Switch-It folder and the module you wish to change. Figure 7 shows Button 1 of module 1 is assigned to Speed Up and Speed Down.
5. To change this double click on the current assignment. In this case you would double click on the "Speed Up" text. This brings up the window as shown in Figure 8.
6. Now select the function you need that button to do by clicking the checkbox, then click OK.
7. Continue this process until all buttons have the desired function.
8. Now click the upload button, shown at right.
9. Now power cycle the chair. Your new assignments are now updated.

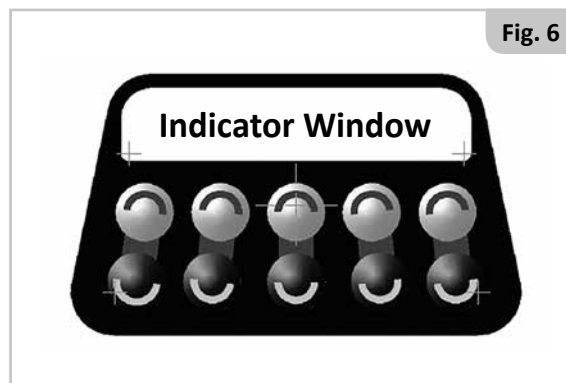


Fig. 6

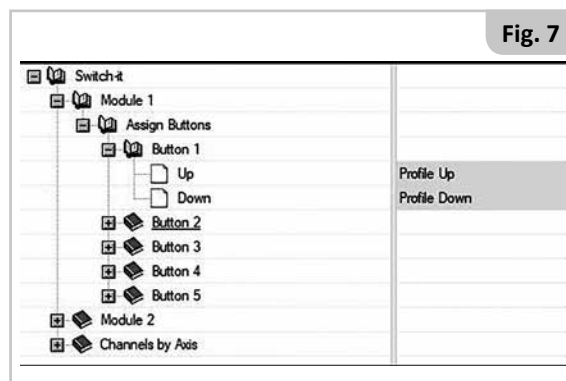


Fig. 7

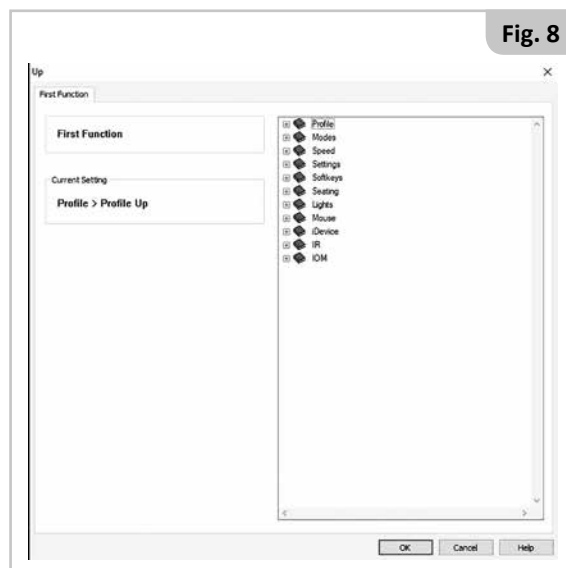


Fig. 8



Troubleshooting:

Issue: Powerchair hourglass shows on display and does not go away

Solution:

1. Unplug Ctrl+5 and turn chair off.
2. Plug Ctrl+5 back in and turn chair on.

Issue: New button assignments are not loading on the device.

Solution:

1. Unplug Ctrl+5 and turn chair off.
2. Power cycle (turn off and turn back on) the chair and retry button assignments to ensure they function as intended.

If you have any questions please call your local Sunrise Medical branch (contact details on the back page).

THIS GUARANTEE DOES NOT AFFECT YOUR LEGAL RIGHTS IN ANY WAY.

Sunrise Medical* provides a guarantee, as set out in the warranty conditions, for products to its customers covering the following.

Warranty conditions:

1. Should a part or parts of the product require repair or replacement as a result of a manufacturing and/or material fault within 24 months, then the affected part or parts will be repaired or replaced free of charge. The warranty will only cover manufacturing defects.
2. To enforce the warranty, please contact Sunrise Medical Customer Service with the exact details of the nature of the difficulty. Should you be using the product outside the area covered by the Sunrise Medical customer service agent, repairs or replacement will be carried out by another agency as designated by the manufacturer. The product must be repaired by a Sunrise Medical designated Customer Service agent, (dealer).
3. For parts, which have been repaired or exchanged within the scope of this warranty, we provide a warranty in accordance with these warranty conditions for the remaining warranty period for the product in accordance with point 1.
4. For original spare parts which have been fitted at the customer's expense, these will have a 12 months guarantee, (following the fitting), in accordance with these warranty conditions.
5. Claims from this warranty shall not arise, if a repair or replacement of a product or a part is required for the following reasons:
 - a. Normal wear and tear, which include but is not limited to the following parts where fitted; batteries, armrest pads, upholstery, tyres, brakes shoes, ferrules, etc.
 - b. Any overloading of the product, please check the EC label for maximum user weight.
 - c. The product or part has not been maintained or serviced in accordance with the manufacturer's recommendations as shown in the user instructions and/or the service instructions.
 - d. Accessories have been used which are not specified as original accessories.
 - e. The product or part having been damaged by neglect, accident or improper use.
 - f. Changes/modifications have been made to the product or parts, which deviate from the manufacturer's specifications.
 - g. Repairs have been carried out, before our Customer Service has been informed of the circumstances.
6. This guarantee is subject to the law of the country in which the product was purchased from Sunrise Medical“

* Means the Sunrise Medical facility from which the product was purchased.



DISPOSAL AND RECYCLING INFORMATION

When this product reaches the end of its life, please take it to an approved collection or recycling point designated by your local or state government. This Seating system is manufactured using a variety of materials, Your product should not be disposed of as ordinary household waste.

You should dispose of your system properly, according to local laws and regulations. Most materials that are used in the construction of this product are fully recyclable.

The separate collection and recycling of your product at the time of disposal will help conserve natural resources and ensure that it is disposed in a manner that protects the environment.

Ensure you are the legal owner of the product prior to arranging for the product disposal in accordance with the above recommendations.





Sunrise Medical S.r.l.
Via Riva, 20 – Montale
29122 Piacenza
Italia
Tel.: +39 0523 573111
Fax: +39 0523 570060
www.SunriseMedical.it

Sunrise Medical AG
Erlenauweg 17
CH-3110 Münsingen
Schweiz/Suisse/Svizzera
Fon +41 (0)31 958 3838
Fax +41 (0)31 958 3848
www.SunriseMedical.ch

Sunrise Medical AS
Delitoppen 3
1540 Vestby
Norge
Telefon: +47 66 96 38 00
Faks: +47 66 96 38 80
post@sunrisemedical.no
www.SunriseMedical.no

Sunrise Medical AB
Box 9232
400 95 Göteborg
Sweden
Tel: +46 (0)31 748 37 00
Fax: +46 (0)31 748 37 37
www.SunriseMedical.se

MEDICCO s.r.o.
H – Park, Heršpická 1013/11d,
625 00 Brno
Czech Republic
Tel.: (+420) 547 250 955
Fax: (+420) 547 250 956
www.medicco.cz
info@medicco.cz
Bezplatná linka 800 900 809

Sunrise Medical ApS
Park Allé 289 G
DK-2605 Brøndby
Tlf. 70 22 43 49
Email: info@sunrisemedical.dk
www.SunriseMedical.dk

Sunrise Medical Pty. Ltd.
6 Healey Circuit, Huntingwood,
NSW 2148,
Australia
Phone: 9678 6600,
Orders Fax: 9678 6655,
Admin Fax: 9831 2244.
Australia
www.sunrisemedical.com.au

Sunrise Medical
North American Headquarters
2842 Business Park Avenue
Fresno, CA, 93727, USA
(800) 333-4000
(800) 300-7502
www.SunriseMedical.com

Sunrise Medical GmbH
Kahlbachring 2-4
69254 Malsch/Heidelberg
Deutschland
Tel.: +49 (0) 7253/980-0
Fax: +49 (0) 7253/980-222
www.SunriseMedical.de

Sunrise Medical
Thorns Road
Brierley Hill
West Midlands
DY5 2LD
England
Phone: 0845 605 66 88
Fax: 0845 605 66 89
www.SunriseMedical.co.uk

Sunrise Medical S.L.
Polígono Bakiola, 41
48498 Arrankudiaga – Vizcaya
España
Tel.: +34 (0) 902142434
Fax: +34 (0) 946481575
www.SunriseMedical.es

Sunrise Medical Poland
Sp. z o.o.
ul. Elektronowa 6,
94-103 Łódź
Polska
Telefon: + 48 42 275 83 38
Fax: + 48 42 209 35 23
E-mail: pl@sunrisemedical.de
www.Sunrise-Medical.pl

Sunrise Medical B.V.
Groningenhaven 18-20
3433 PE NIEUWEGEIN
The Netherlands
T: +31 (0)30 – 60 82 100
F: +31 (0)30 – 60 55 880
E: info@sunrisemedical.nl
www.SunriseMedical.nl

Sunrise Medical HCM B.V.
Vossenbeemd 104
5705 CL Helmond
The Netherlands
T: +31 (0)492 593 888
E: customerservice@sunrisemedical.nl
www.SunriseMedical.nl
www.SunriseMedical.eu
(International)

Sunrise Medical S.A.S
ZAC de la Vrillonnerie
17 Rue Mickaël Faraday
37170 Chambray-Lès-Tours
Tel : + 33 (0) 247554400
Fax : +30 (0) 247554403
www.sunrisemedical.fr

EC REP



CE



 **SUNRISE**
MEDICAL®